

Instructions of GenerateSuperPassword

Software version:

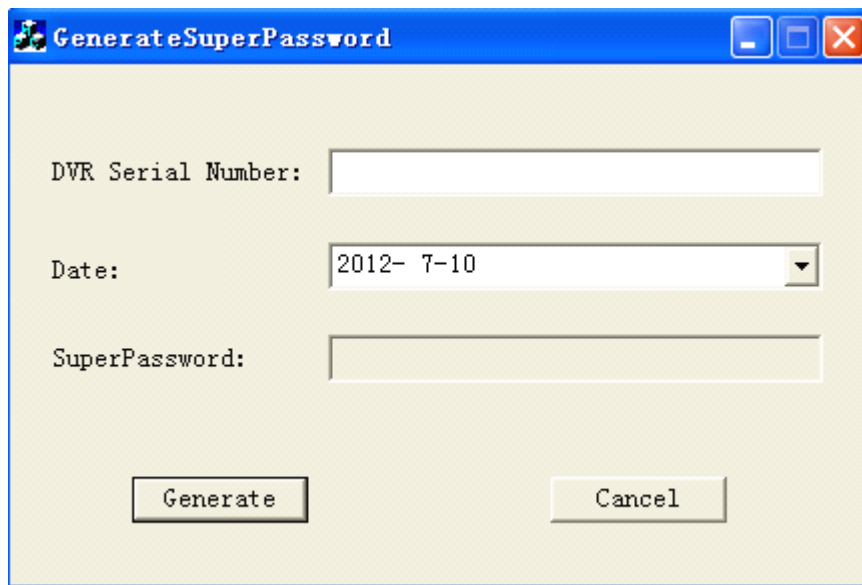
Hisilicon:above 1.0.1.17

Faraday:above 8.50

Purpose:help users back to the default password when you forget present one.

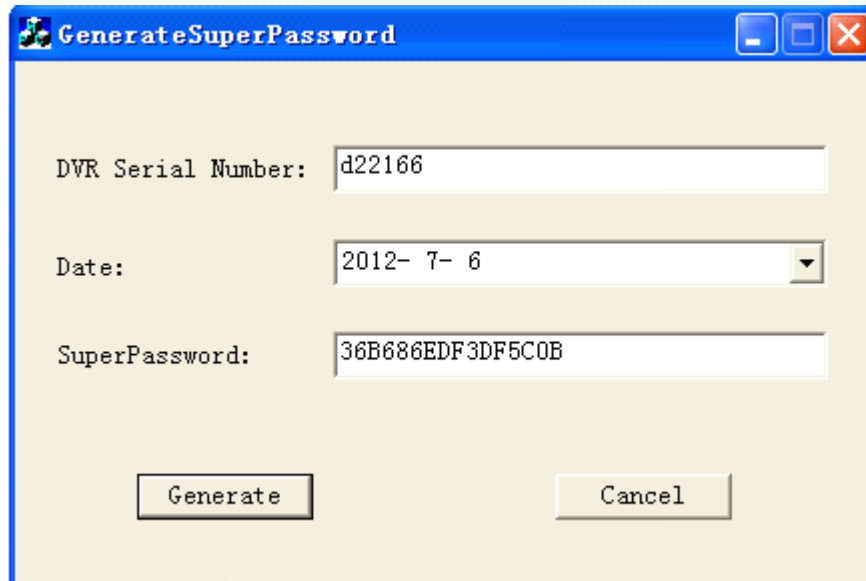
Steps as following:

- 1) Start DVR, enter login interface, click "forget password", pop up forget password message box, users can see serial number of the DVR.
- 2) Run GenSuperPassword. exe.



The screenshot shows a Windows-style application window titled "GenerateSuperPassword". The window has a blue title bar with standard minimize, maximize, and close buttons. The main content area is light beige and contains three input fields: "DVR Serial Number:" with a text box, "Date:" with a dropdown menu showing "2012- 7-10", and "SuperPassword:" with a text box. At the bottom are two buttons: "Generate" and "Cancel".

- 3) Input the serial number and date in corresponding text-box. Choose the date must according to the date you set on DVR. For example, you set the date 2012-08-09, then you can fill in 2012-08-09 or 2012-08-08 or 2012-08-07, and other dates won't work.
- 4) Click "Generate", appear such information show as below:



- 5) Input the super password that get from GenSuperPassword.exe to the forget password message box on DVR.
- 6) Click "ok", pop up "User account initialization is successful".
- 7) Click "ok", then use default password to login. the default password is empty.

Note: If there's wrong with super password, please check you choose the right date or fill in right password carefully.